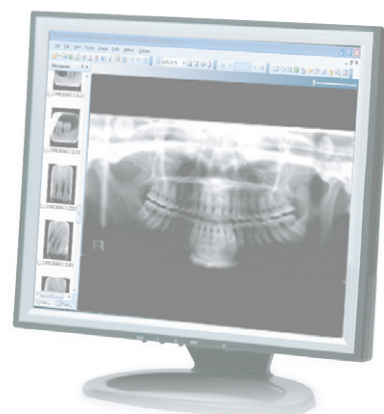




# Medi-2200 plus

*Medical Imaging Systems*



**Digitizer  
for all  
Dental films**

## **Hi-Speed Dental Digitizer Smart and Easy with Full-Function**

Microtek dental digitizer, the Medi-2200 Plus, can digitize the panoramic film rapidly in 12 seconds. With the advanced technology of LED light source, the Medi-2200 Plus can reach full brightness and on/off operation immediately. The energy-saving Medi-2200 Plus is perfect for fast-paced environment of the dentist's office, QC Station, and PACS.

The Medi-2200 Plus is a professional dental digitizer with full functions. It can easily transfer all kinds of dental films into digital format for easier management in a long term of time. The three Smart-Scan buttons of Medi-2200 Plus provide a quick and easy way to start the scanning process without requiring any efforts to go through the software interface. Also, using the templates together with the Auto-Crop function offered by the specially designed software, the Medi-2200 Plus can quickly perform scanning, cropping, and saving images for multi-films at a time.

Equipped with 16-bit grayscale, 4.0 Dmax, and an optical resolution up to 4800 dpi, the Medi-2200 Plus ensures that your scans capture all the details presenting in light and darkness areas, offering the clinically proven image quality to the medical professionals. In addition, through the MiPAX gateway software, the digitized dental films by the Medi-2200 Plus can be easily and quickly integrated with the PACS system, allowing dentists and patients to check the therapy conditions simultaneously.

## **Features**

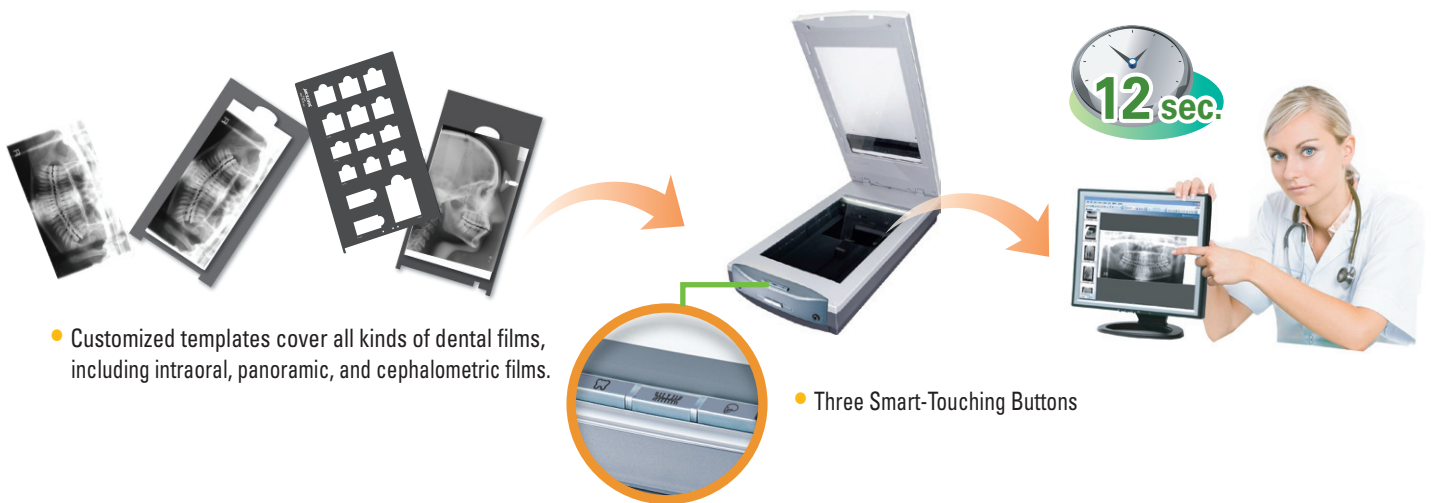
- SFDA certified
- No warm up time with LED light source
- 4.0 Dmax, 4800 dpi optical resolution (5 um spot size, 94 lp/mm)
- Smart-Scan & Auto-Crop for multiple images at a time
- Provides customized templates to scan intraoral / pano / cepha films
- Supports DICOM 3.0 and telemedicine with MiPAX-Dental
- Easy to operate, clean, and maintain
- Offers better quality, performance, and secure e-medical records

## Fast scan speed, warm-up free, & Auto-Crop

- 12 seconds per scanning of the dental panoramic film. No warm up time with LED light source.

## Smart-Scan function, versatile templates, and quick scanning time save efforts

- Smart-Scan function lets you easily scan, crop and save scanned images of multi films into individual file, simply by using the templates and the Auto-Crop function together.



- Customized templates cover all kinds of dental films, including intraoral, panoramic, and cephalometric films.

- Three Smart-Touching Buttons

## Three Smart-Scan buttons to launch the digitizing function quickly and easily



Medi-2200 Plus  
Dental Digitizer

MiPAX-Dental Workstation

### Specifications

<b>Model type</b>	MMS-9600TFU2L
<b>Three templates</b>	Size 0, 1, 2, 3, 4, Panoramic and Cephalometric films
<b>Scanning area</b>	8.0" x 12"
<b>Scanning speed</b>	12 seconds @ 300 dpi, 8" x 12", 6" x 12" (Pano)
<b>Scanning mode</b>	8 / 12 / 16-bit grayscale
<b>Optical resolution</b>	Default: 300 dpi, up to 4800 dpi (5 µm spot size, 94 lp/mm)
<b>Optical density</b>	4.0 Dmax
<b>Connectivity</b>	Hi-Speed USB (USB 2.0)
<b>Dimensions (L x W x H)</b>	576 x 297 x 118 mm
<b>Weight</b>	6.4 kg
<b>Power source</b>	100 to 240 VAC, 47 to 63 Hz, 30 Watts
<b>Light source</b>	LED
<b>System requirements</b>	<ul style="list-style-type: none"> <li>• CD-ROM drive (for installing software)</li> <li>• 2 GB RAM or more</li> <li>• Pentium IV or higher With Hi-Speed USB (USB 2.0) port</li> <li>• Microsoft Windows 7 / Vista / XP / 2000</li> </ul>
<b>Certifications</b>	SFDA, BSMI, CB, CCC, CE, ETL, FCC, RoHS

© 2011 Microtek. Microtek, ScanMaker, ArtixScan, and ScanWizard are trademarks or registered trademarks of Microtek International, Inc. All other brands, product names and logos herein are trademarks or registered trademarks of their respective holders. Specifications, software bundles and accessories are subject to change without notice. Delivery of technical support services subject to change without notice. Not responsible for typographical errors. Digital Imagery © 2011 Jupiterimages Co. Mar. 2011



Microtek International Inc.  
No. 6, Industry East Road 3,  
Science-Based Industrial Park,  
Hsinchu, Taiwan 30077

**EC REP**

EVESTAR GmbH,  
Linsellesstraße 127-129  
D-47877 Willich, Germany

**MICROTEK**  
DICOM READY  
www.microtek.com