



ECO 5

Ultra-Portable, **Ultra**-Affordable, **Color** doppler



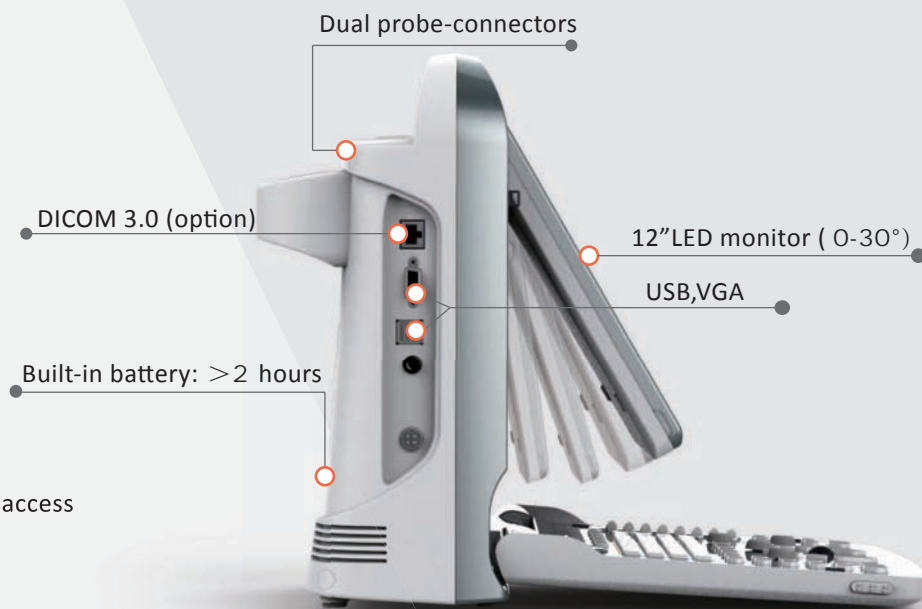
CHISON
Value Beyond Imaging

Eco-friendly

- Less radiation
- Lower power consumption
- Longer life: LED

Ergonomic

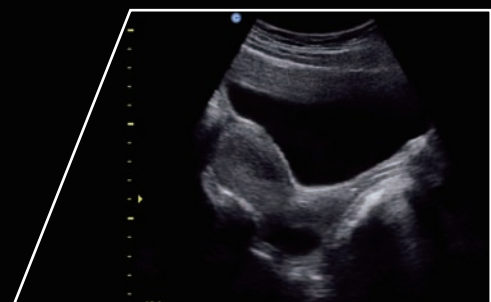
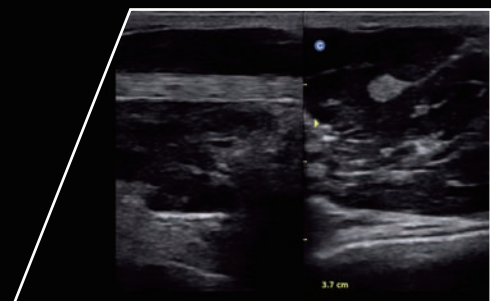
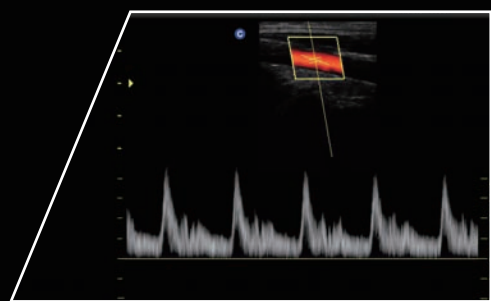
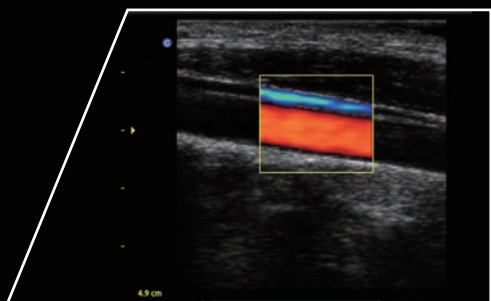
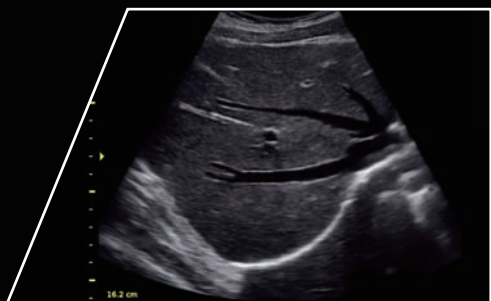
- Rotatable LED monitor (0~30°): tailor to different viewing angles
- Unique LED: reduce eye fatigue
- Keyboard design: for easy and quick access
- Full screen display mode



Excellent

- Full digital beam-former
- Color doppler technology
- Advanced fast frame rate technology
- Color filter
- Applications
- Abdomen, OB&GYN, Urology, Vascular, Small Parts, Pediatrics, MSK, Basic Cardiology
- Display modes: B, B/B, 4B, M, B/M, CFM, PW, Trapezoidal
- Advanced technologies: i-Image, THI, SRA, Compound imaging
- 8G memory card
- 320G harddisk (option)
- streamlined workflow





• Streamlined Workflow

The multi-purpose user presets, comprehensive measurement & report system, built-in EasyView image archive system, quick image storage / retrieve / transfer, one-button direct print, make the complete workflow better than what you can dream of.



Various Measurements



Detailed Reports



EasyView Image Archive System

• ONE KEY



- **Support PC Printer** (HP DeskJet 1010, HP LaserJet 1020 Plus, HP LaserJet Pro P1102W, HP LaserJet Pro 200 M251n & SONY UP-X898MD)



Convex C3-A



Linear L7M-A



Linear L7S-A



Micro-Convex MC3-A



Transvaginal V6-A



Micro-Convex MC6-A



Transrectal R7-A

CHISON MEDICAL IMAGING CO., LTD.

No. 9 Xin Hui Huan Road, New District, Wuxi, Jiang Su Province, China214028

TEL: 0086-510-85310593 / 85310937 FAX: 0086-510-85310726 EMAIL: export@chison.com.cn

Click the link below to follow us:



We reserve the right to make changes to this catalogue without prior notice.
Please contact us or your local dealer for the latest information.

* Please refer to the user manual for details